



# MONTHLY MEMBERSHIP PROGRESS REPORT

District C 2

Results as of: 03/31/2019

GMT: GORDON ZIEGLER

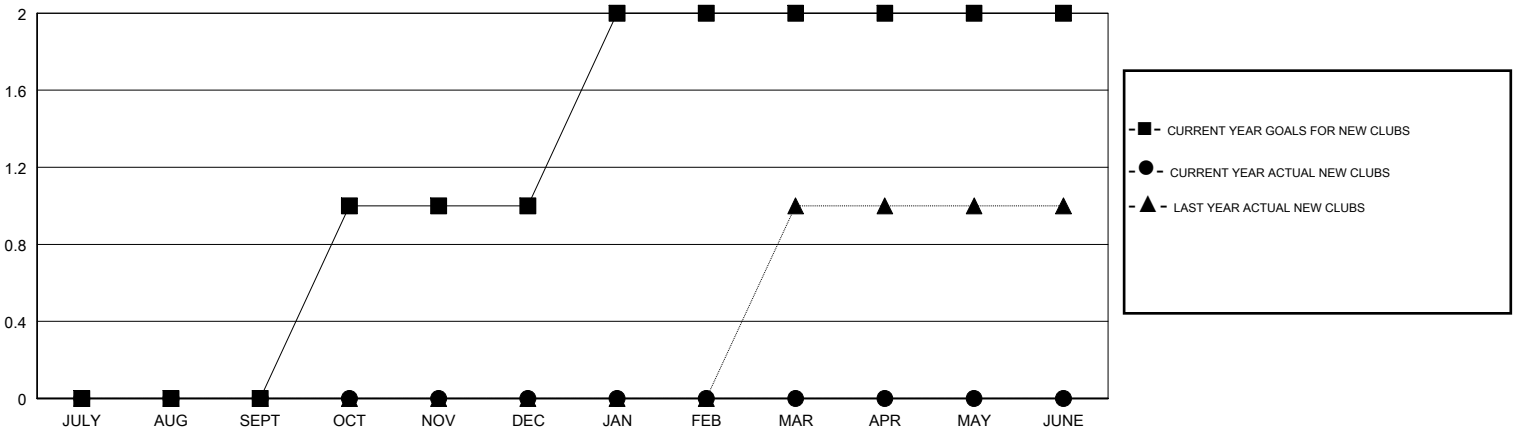
LOCATION ALBERTA

GMT CA

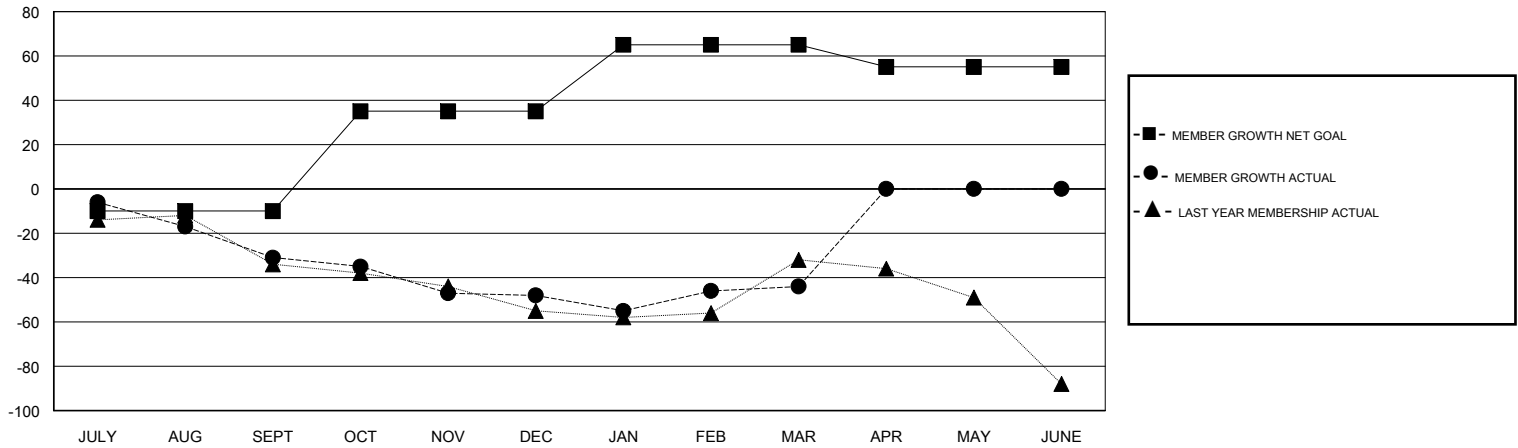
| Clubs                 |               |           |               |
|-----------------------|---------------|-----------|---------------|
| RESULTS FOR 2018-2019 |               |           |               |
| QUARTER               | NEW CLUB GOAL | NEW CLUBS | DROPPED CLUBS |
| JULY/AUG/SEPT         | 0             | 0         | 0             |
| OCT/NOV/DEC           | 1             | 0         | 0             |
| JAN/FEB/MAR           | 1             | 0         | 0             |
| APR/MAY/JUNE          | 0             | 0         | 0             |

| Members               |                        |                      |  |
|-----------------------|------------------------|----------------------|--|
| RESULTS FOR 2018-2019 |                        |                      |  |
| QUARTER               | MEMBER GROWTH NET GOAL | MEMBER GROWTH ACTUAL | DROPPED MEMBERS ACTUAL (including transfers) |
| JULY/AUG/SEPT         | -10                    | 26                   | 54   |
| OCT/NOV/DEC           | 45                     | 45                   | 56   |
| JAN/FEB/MAR           | 30                     | 67                   | 51   |
| APR/MAY/JUNE          | -10                    | 0                    | 0  |

GOALS AND ACTUAL NEW CLUBS CUMULATIVE



GOALS AND ACTUAL MEMBERS CUMULATIVE



|                  |  |   |                |
|------------------|--|---|----------------|
| DROPPED CLUBS: 0 | 47 CLUBS OF 90 ADDED 1 OR MORE NEW MEMBERS | <u>GENDER DISTRIBUTION</u>                                |                |
| DROPPED MEMBERS  |  | MALE  | 1,564 (74.33%) |
| DECEASED         | 25   | FEMALE  | 540 (25.67%)   |
| CLUB CANCELLED   | 0  | Women Percentage Fiscal Year Goal: 30%                    |                |
| OTHER            | 136  | <a href="#">CLICK HERE FOR CUMULATIVE MEMBERSHIP DATA</a> |                |
| TOTAL            | 161  | TOTAL FAMILY UNIT MEMBERS                                 | 312            |
|                  |  | FAMILY MEMBERS PAYING HALF DUES                           | 159            |